

NEB Academy NEBAP Hub

Andreja Kutnar & Mike Burnard
University of Primorska

Forum Holzbau
Innsbruck, Austria
4 December 2024
Prologue V

2021 - New European Bauhaus – initiative of European Commission

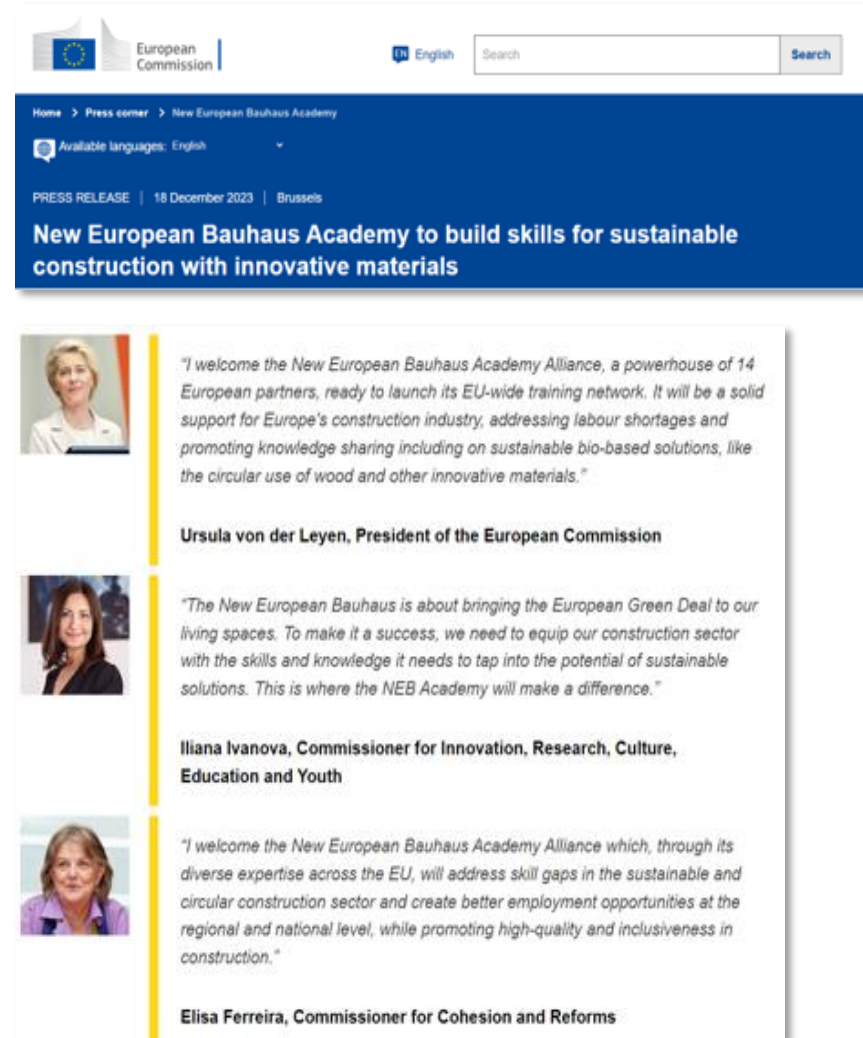
3 key factors: environmental sustainability, social inclusion and beauty/art/culture to build bridges between different areas of knowledge and different disciplines to connect the Green Deal to every day lives



Do we have enough skills?



New European Bauhaus Academy



The screenshot shows a press release page from the European Commission. At the top, there is the European Commission logo and a search bar. Below the navigation bar, the text reads: "Home > Press corner > New European Bauhaus Academy". There is also a language selection dropdown set to "English". The main heading of the press release is "New European Bauhaus Academy to build skills for sustainable construction with innovative materials", dated "18 December 2023" in "Brussels".

The press release features three quotes from EU officials:

- Ursula von der Leyen, President of the European Commission:** "I welcome the New European Bauhaus Academy Alliance, a powerhouse of 14 European partners, ready to launch its EU-wide training network. It will be a solid support for Europe's construction industry, addressing labour shortages and promoting knowledge sharing including on sustainable bio-based solutions, like the circular use of wood and other innovative materials."
- Iliana Ivanova, Commissioner for Innovation, Research, Culture, Education and Youth:** "The New European Bauhaus is about bringing the European Green Deal to our living spaces. To make it a success, we need to equip our construction sector with the skills and knowledge it needs to tap into the potential of sustainable solutions. This is where the NEB Academy will make a difference."
- Elisa Ferreira, Commissioner for Cohesion and Reforms:** "I welcome the New European Bauhaus Academy Alliance which, through its diverse expertise across the EU, will address skill gaps in the sustainable and circular construction sector and create better employment opportunities at the regional and national level, while promoting high-quality and inclusiveness in construction."

Workshop to co-design the NEB Academy

March 6-7, 2023

International experts and EC co-designed the structure and operating concept for the overall NEB Academy, and defined the foundation, goals, and basic operations of the NEB Academy at the University of Primorska.





NEBAP HUB New European Bauhaus Academy Pioneer Hub for Sustainable Built Environments with Renewable Materials

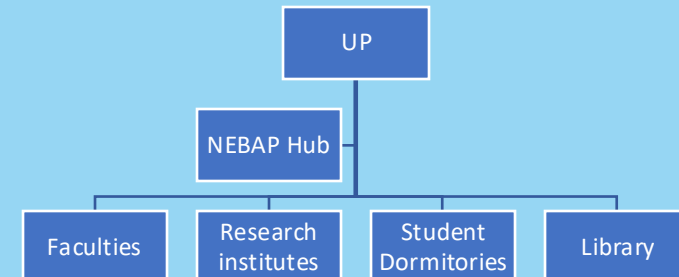


NEBAP HUB

The NEBAP Hub established as
a University centre
(independent unite) on June
14, 2023

NEBAP Hub bodies:

1. Head
2. Management Board
3. Council Board





NEBAP HUB

Focusing on the **sustainable built environments** that are regenerative and inclusive spaces that minimise environmental impacts through decarbonisation and lead to positive societal and economic impacts, including health and wellbeing

New European Bauhaus Academy Alliance



To establish an international network
New European Bauhaus Academy Alliance
ensure high quality training is available and delivered
to as many workers as possible across Europe and the surrounding regions

NEB Academy Mission

NEB Academy's mission is to train, upskill, and reskill the construction ecosystem to achieve a carbon neutral building sector and a beautiful, sustainable, and inclusive transformation of the built environment.

Vision in 2 years

With support of the NEBA Alliance project, the NEB Academy has established a self-sustainable and recognised pan-European training ecosystem of NEBA Hubs and pilot training activities.

Vision in 5 years

The NEB Academy offers micro-credentials and other training formats that are transferable across Europe in certain professions within the construction ecosystem to maintain the current knowledge and to upskill workers while shaping the skills policies of the European Union.

Vision in 10 years

The NEB Academy is acknowledged internationally and shapes the policies of the European Union and beyond by offering high quality trainings on a broad scale.

TARGET GROUPS

TG1

Education, training and academia

TG3

Public bodies and policy makers

TG2

Construction ecosystem, private sector

TG4

General public and civil society

NEB Academy officially launched at the NEB Festival (April 11, 2024)



- About
- Apply for funding
- Projects
- Achievements
- News & Events
- Documents

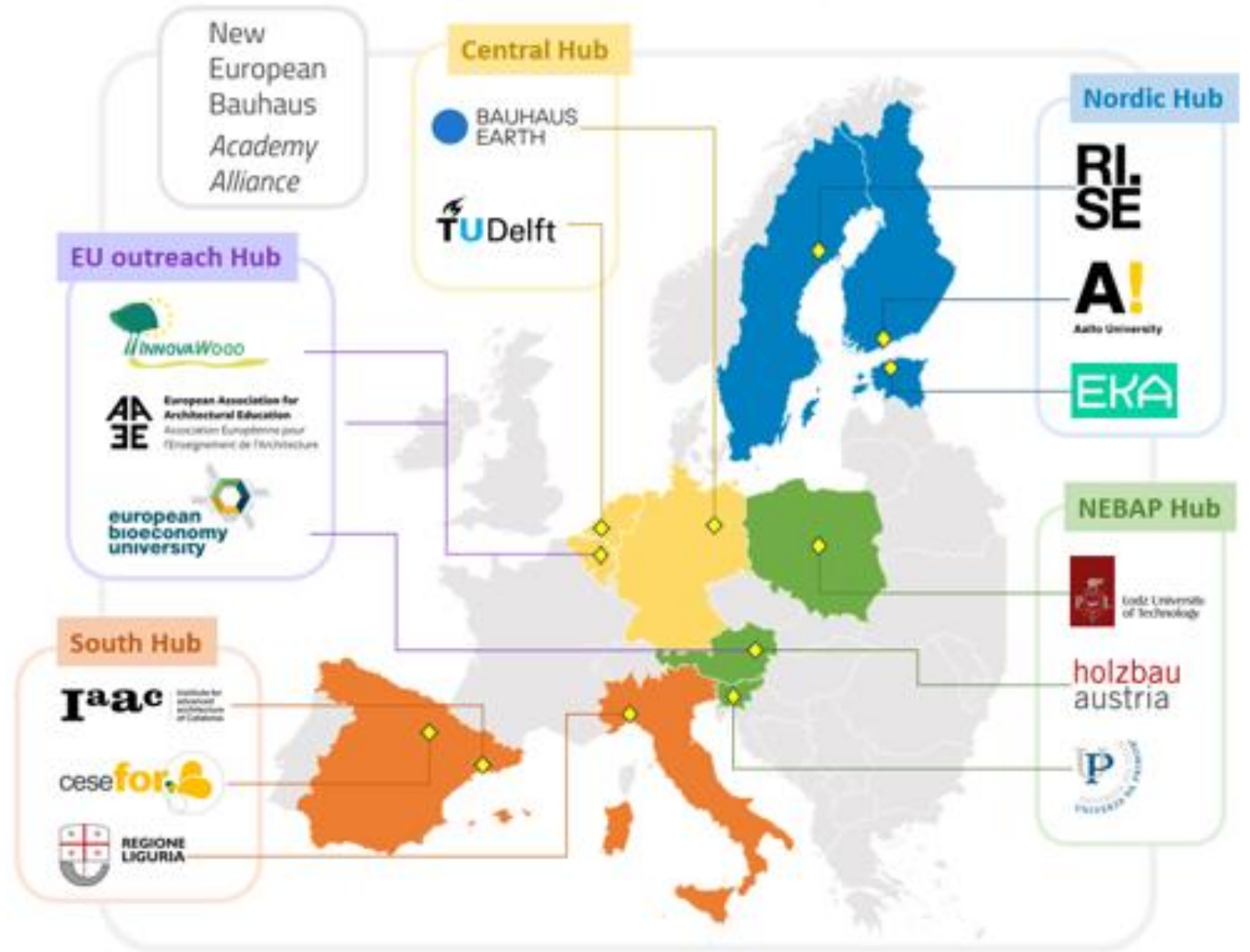


Short video:



<https://www.youtube.com/watch?v=yEi3X5JxoiY>

Establishing NEB Academy Hubs throughout Europe



Status

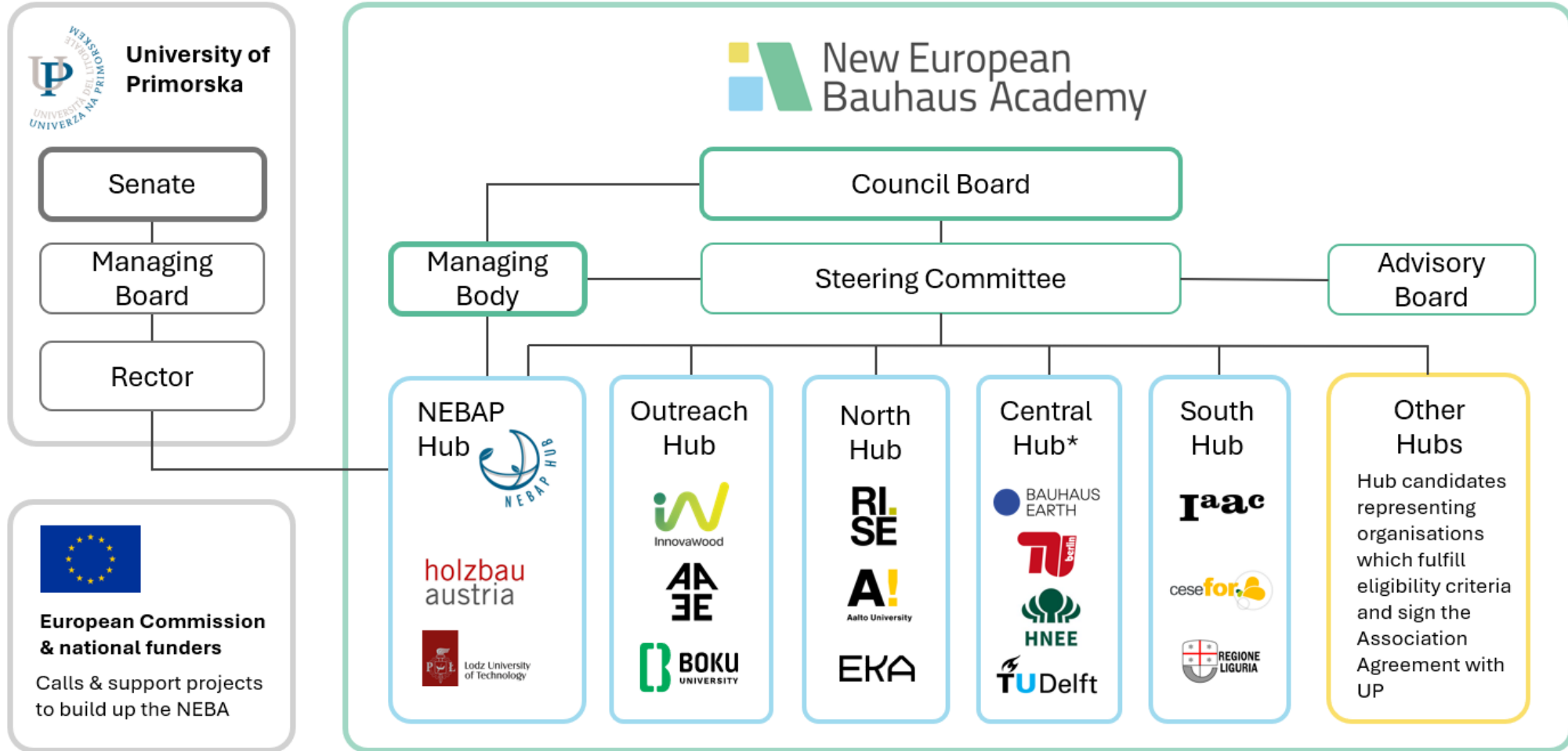
Memorandums of Understanding (MoU)

have been agreed by the founding partners of each Hub:

- NEBAP Hub: UP, TUL, Holzbau Austria
- NEBA Central Hub: Bauhaus Earth, TU Berlin (TUB), Eberswalde University for Sustainable Development (HNEE), UP
- NEBA South Hub: IAAC, Cesefor, Liguria, UP
- NEBA North Hub: RISE, Aalto, EKA, UP
- NEBA Outreach Hub: IW, EAAE, EBU, UP



Business model of NEB Academy





Open call for onboarding new Hubs and Hub members

A cascading grant scheme will be offered to emerging Hubs and engaged actors.

The best applications will be selected to receive support funding for onboarding to the Alliance and providing training contents to the NEBA.

**Open call launched beginning
2025.**



Online Collaborative Platform

Online space as a Single-Entry-Point to the educational contents and training offers.

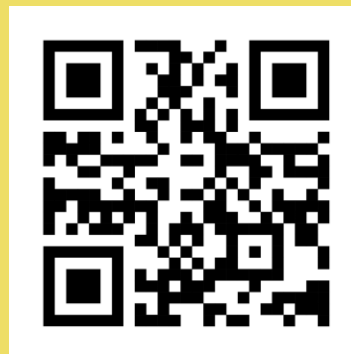
A collective directory to training providers and offers, such as programmes courses, open materials, certificates, and a calendar of training events.



NEB Academy



Follow the NEBA
on LinkedIn



Andreja Kutnar

andreja.kutnar@innorenew.eu

Website : neb.academy

Linkedin : [NEB-Academy](https://www.linkedin.com/company/NEB-Academy)

NEB Academy
North Hub

Prof. Dr. Matti Kuittinen
Aalto University

Forum Holzbau
Innsbruck, Austria
4 December 2024
Prologue V

A satellite-style map of Europe at night, showing city lights and geographical features. Three white dots are placed on the map: one in Sweden, one in Finland, and one in Estonia. White lines connect these dots to their respective labels. The labels are in white text.

RISE Research
Institutes of
Sweden

Aalto University,
Finland

EKA Estonian
Academy of Arts



Iceland
2040

Norway
2030

Finland
2035

Sweden
2045

DK
-70%
2030

EU carbon neutral by 2050

The arctic
is warming

4x

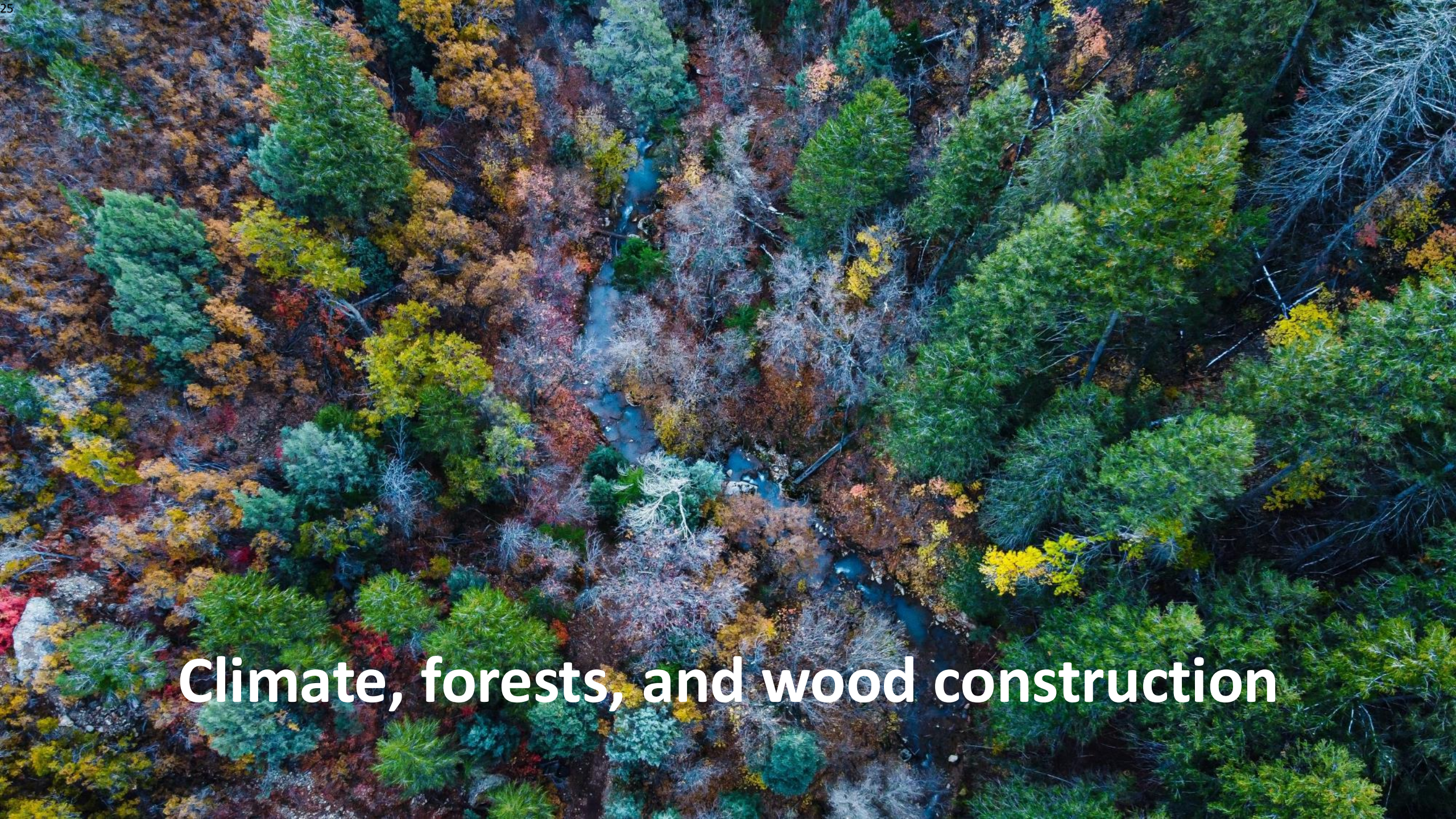
faster than the
rest of our planet





Changing weather and landscape

Mjøstårnet by Voll Arkitekter

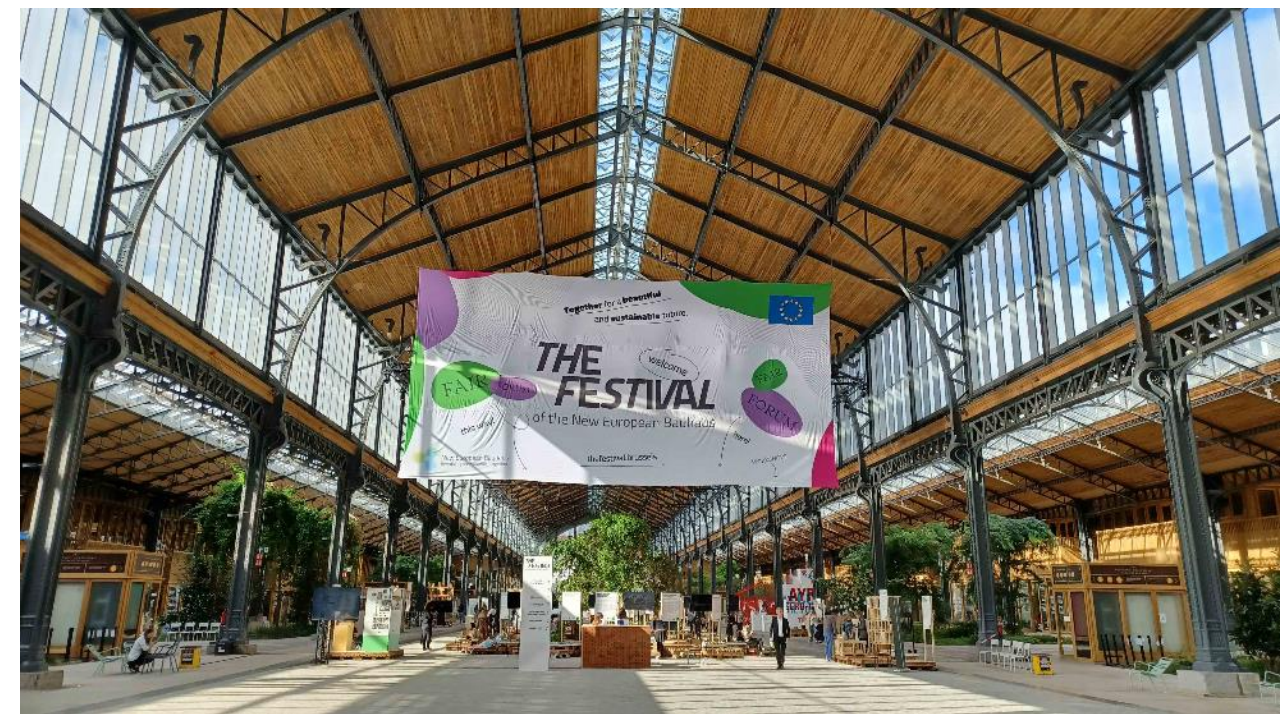


Climate, forests, and wood construction



**“The ultimate goal of the architect
is to create a paradise.”**

- Alvar Aalto





The Challenge in Construction Industry

The construction industry is a major contributor to global emissions. Decarbonizing this sector is essential for meeting climate goals. At the same time, as regulations tighten, companies must adopt sustainable practices, and the workforce needs **upskilling** to meet these new demands.

- **Green Skills Gap:** Many professionals lack expertise in sustainable building practices, including Life Cycle Assessments (LCA), use of low-carbon materials, and energy-efficient technologies.
- **Industry Demands:** With global targets like net-zero emissions by mid-century, there's a growing need for trained individuals who can implement sustainability strategies.

NEB Academy's role in sustainability and green skills gaps in the market

Skill Development: Programs created together with Universities and matched with industry needs can serve the demand for specialized training, offering *certifications*

Benefits

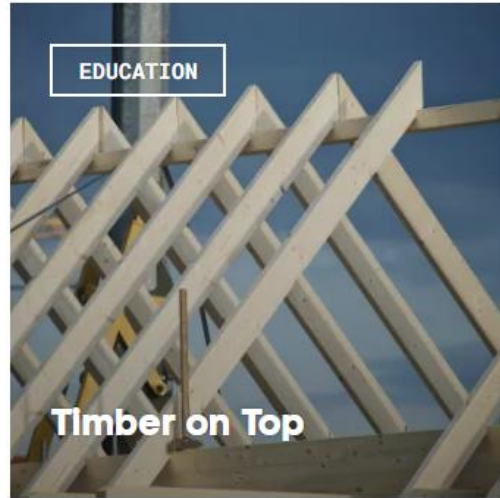
- **For Professionals:** Gain in-demand skills and industry-recognized certifications.
- **For Companies:** Meet regulatory requirements, reduce operational costs, and enhance brand reputation.
- **For Society:** Contribute to global climate goals and the transition to sustainable living.

We will collaborate in skills development with both individuals providing **skill-based learning opportunities** and companies with **tailored courses and academies** based on their specific needs.

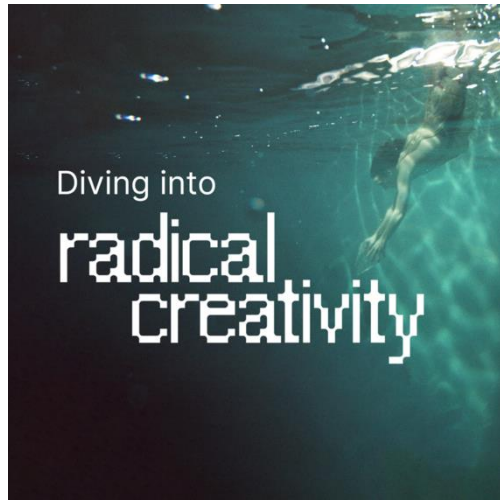
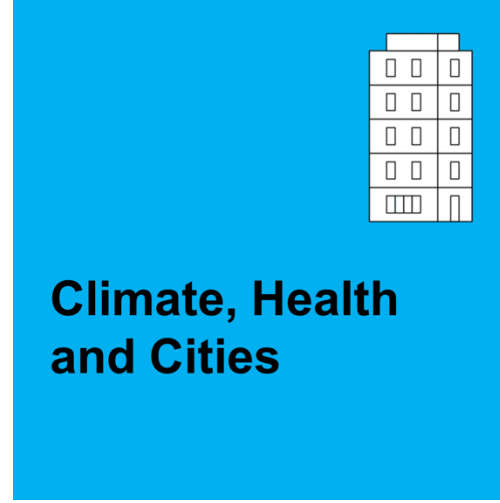
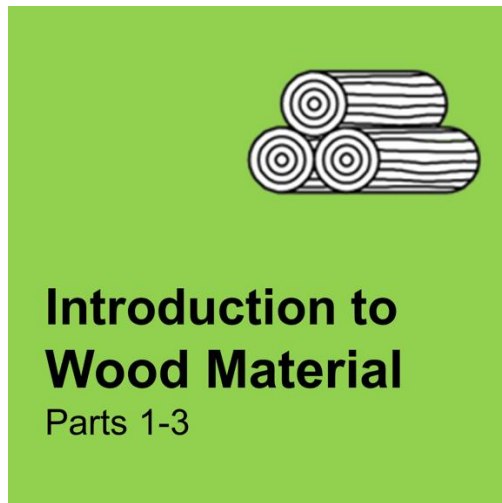


NEB PIONEER TRAININGS - OPEN COURSES WITHIN NEB ACADEMY

RI
SE



A!
Aalto University



“Industry has largely been sheltered from the impacts of climate policy and carbon pricing due to concerns for **competitiveness** and carbon leakage.”

“Producer, user, and **regulator education** are needed.”

Professor Jim Skea, Chair of IPCC,
speaking in COP29



The arctic
is warming

4x

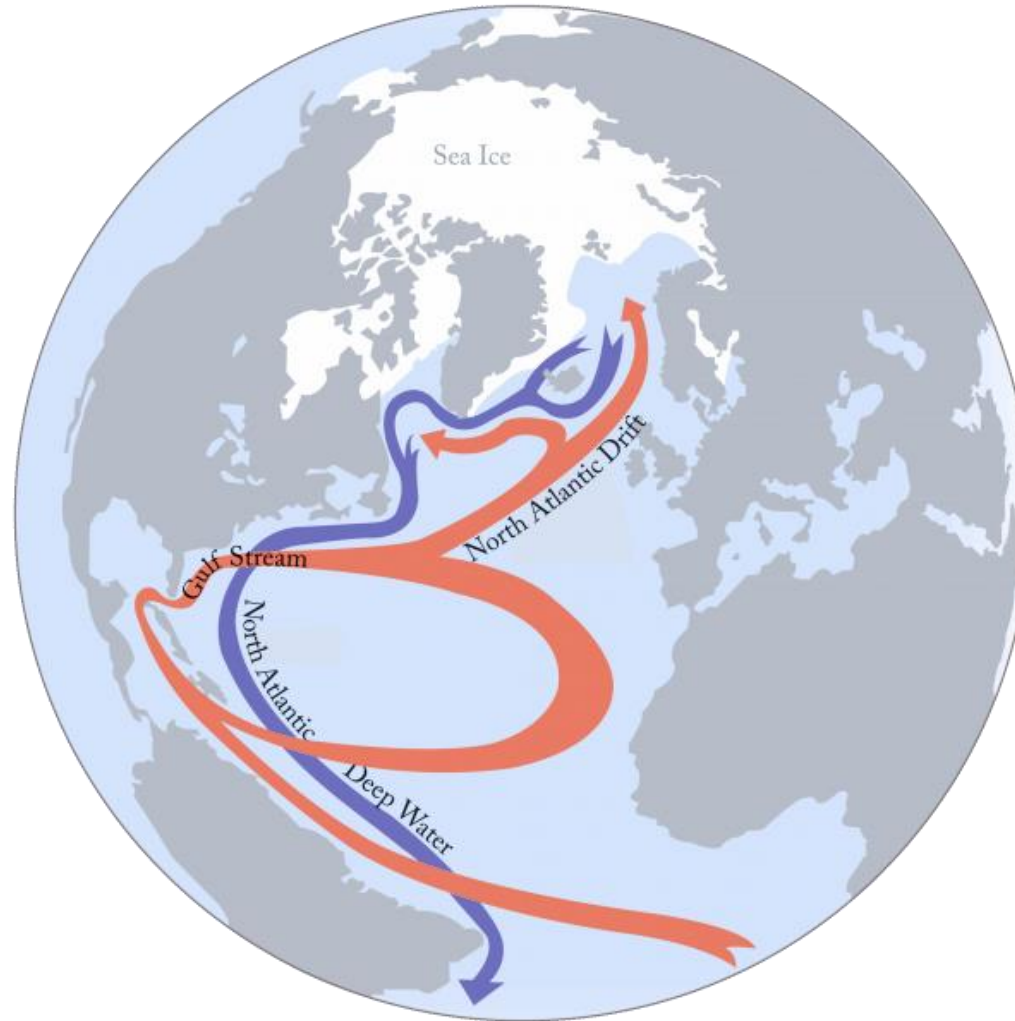
faster than the
rest of our planet



Could the Atlantic meridional overturning circulation collapse?

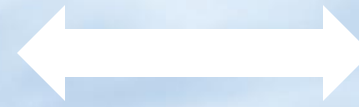
Source: Smolders, van Westen & Dijkstra, 2024

**59% probability
for collapse by
2050**



**95% probability
for collapse by
2100**

Warmer or cooler?



**Climate change
adaptation**



**Two strongly
differing scenarios**



**Major implications
to the built
environment**



**Requires
preparedness
planning**



**Prerequisite:
Agile upskilling
and reskilling**



**Decarbonisation
of the building
sector**

From all of us to all of you!





Follow the NEBA
on LinkedIn



Matti Kuittinen
matti.kuittinen@aalto.fi

Website : neb.academy
Linkedin : [NEB-Academy](https://www.linkedin.com/company/NEB-Academy)

NEB Academy Outreach Hub

Uwe Kies & Oliver Jancke
InnovaWood

Forum Holzbau
Innsbruck, Austria
4 December 2024
Prologue V

Together

- SMEs manufacturing high value products
- major employer in rural areas



New
European
Bauhaus

Forest



Sustainable

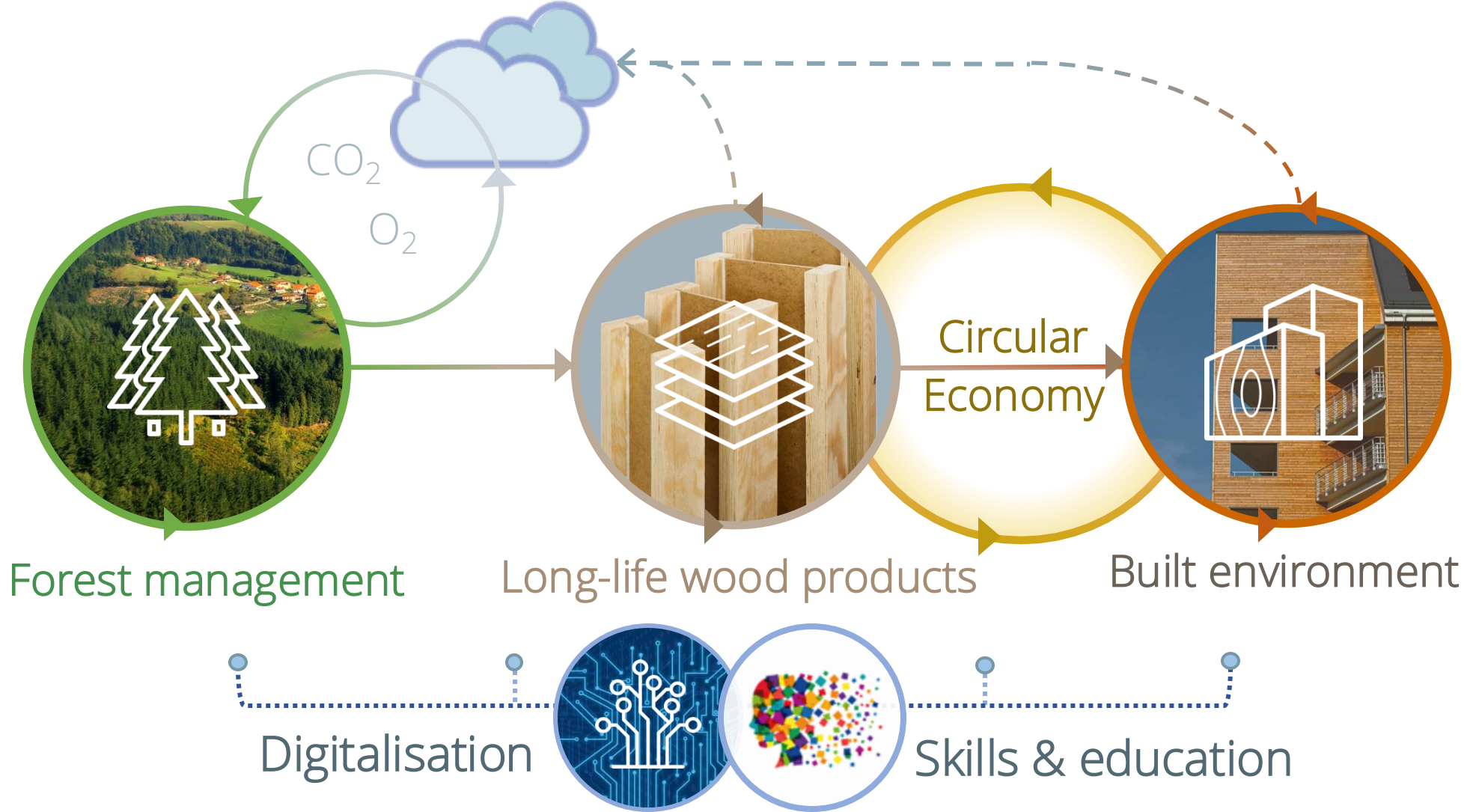
- managed ecosystems protecting natural cycles & climate
- true carbon pump
- wood: renewable material

Building

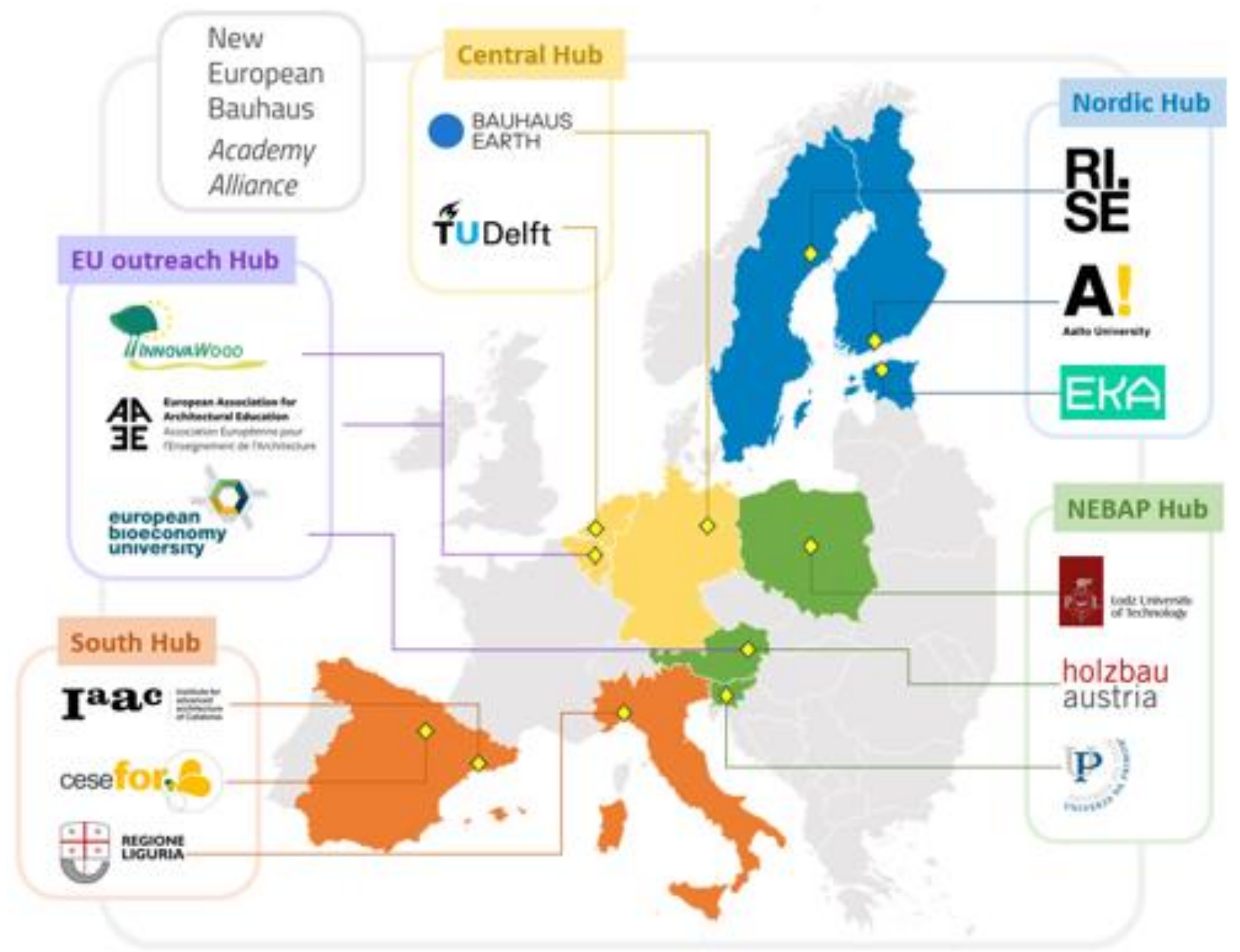


Beautiful

- aesthetic buildings & interiors
- healthy living & workplaces



Establishing NEBA Hubs throughout Europe



NEBA Outreach Hub

Main objective

NEBA establishes a primary contact point for outreach to and coordination with other European projects, networks, initiatives, and key stakeholders in research, education, and policy.

NEBA Outreach Hub



Four partners organisations are preparing to sign a Joint Memorandum of Understanding.



InnovaWood
connect share influence



- InnovaWood is the **European network** for wood research, innovation and education with **70+ member organisations** in **30 countries** of Europe. It includes RTO, higher education institutions, clusters, VET centres, all related to the wood sector.
- InnovaWood connects researchers and innovation stakeholders, supports the of **EU-funded projects** and engages in **policy advocacy** together with industry associations, other research networks and interest groups on both national and EU level.



Uwe Kies
Secretary General



Oliver Jancke
Business Developer



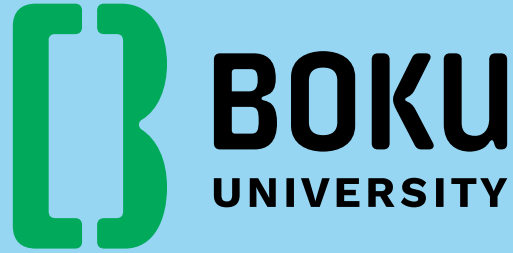
**European Association for
Architectural Education**

Association Européenne pour
l'Enseignement de l'Architecture

- EAAE European Association for Architectural Education is an international organisation of **150+** architectural schools.
- The purpose of the Association is to advance the **quality of architectural education** and also to promote the quality of architecture in Europe.
- The Association provides a **forum** for generating information on aspects of architectural education and architectural research.



Roberto Cavallo
President of EAAE



- Founded in 1872, BOKU is an education and research centre for renewable resources in Vienna, Austria, combining **natural sciences, engineering and biotechnology** as well as **social and economic sciences**. BOKU focuses on the protection of habitats, economy and living standards, the management of natural resources and environment, the protection of food and health.
- *European Bioeconomy University* (EBU) is a network of **eight leading universities** in all sectors of the bioeconomy. EBU members share knowledge and educational formats, supporting each other in EU projects of Horizon, Erasmus, Marie Curie-Sklodoswka and other.



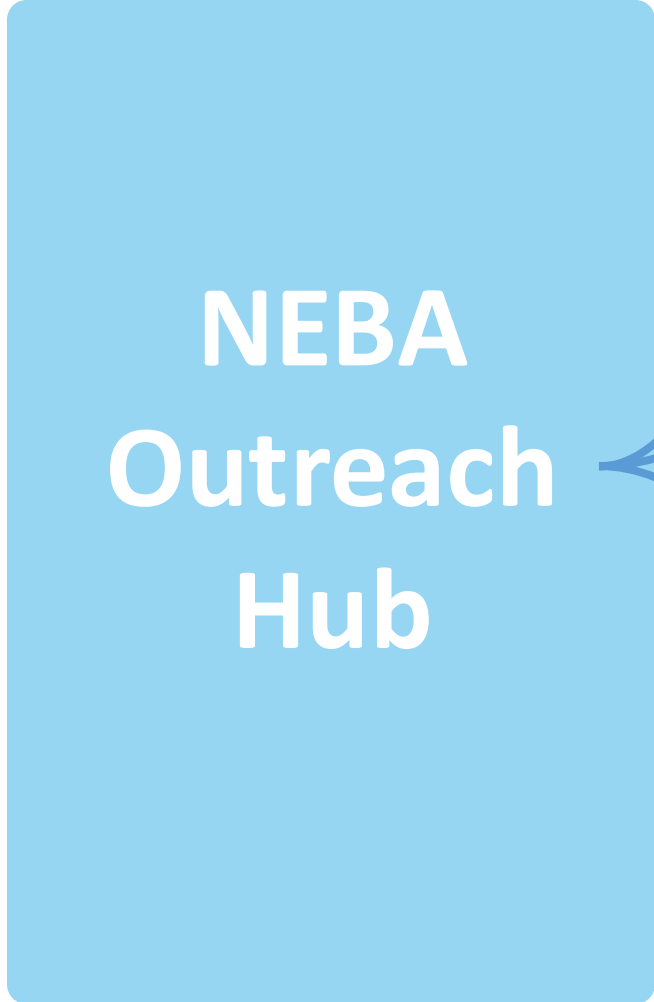
Martin Greimel
BOKU Centre for Bioeconomy

Scope of collaboration

1. **Support** existing and new **training, education, research and innovation** activities in sustainable biobased construction and other sectors related to the built environment.
2. **Be an active contact point on the European level** for sharing of knowledge and expertise and the communication, dissemination and exploitation of results.
3. **Codesigning the NEB Academy** and the role of the NEBA Outreach Hub in terms of legal structure, criteria and tools for quality assurance, and the self-sustaining business model.
4. **Mapping and screening of other initiatives** to identify relevant potential partners and available training contents of relevance for the NEB Academy.

Scope of collaboration

5. Joint policy advocacy and consultations directed towards the European Commission and its bodies, national governments and other key actors.
6. Partnerships and joint actions between the Hub members, to ensure additional **funding** for the establishment of the NEB Academy.
7. Networking support via codesign events, conferences and workshops.



NEB Hub projects



NEB Academy Hub Ukraine

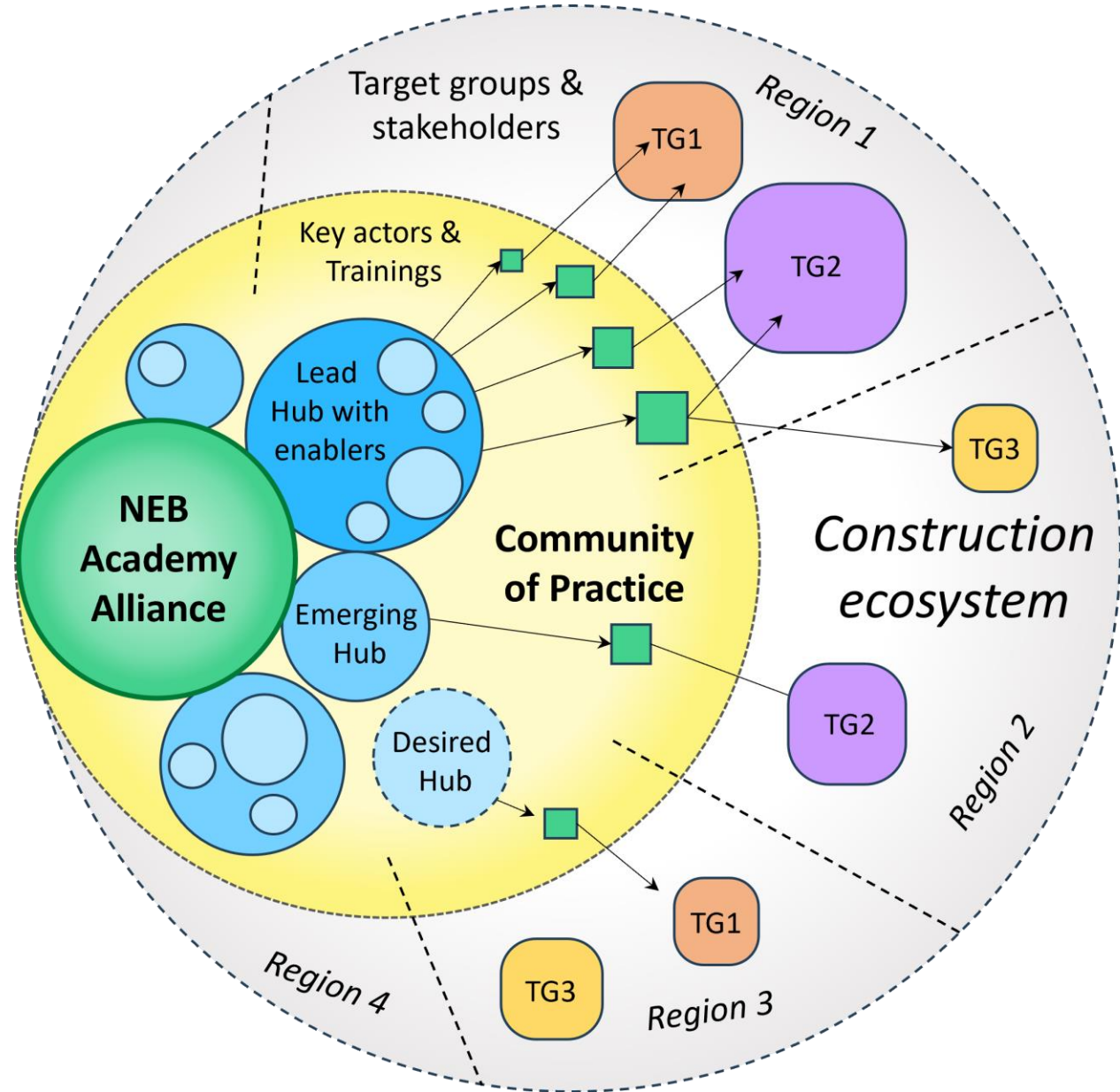
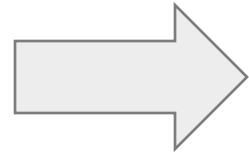
Research & Innovation projects



Supporters & associated partners



NEBA Outreach Hub



NEBA Outreach Hub : A network of networks

Linking with many sectoral organisations, projects and actions

Engineered Wood Products



Mass timber



Wood panels



Wood fibre insulation



Construction sector

Architecture

Urban planning

Cities and regions

Culture & heritage

Social actors,
inclusive society

Bioeconomy

Nature-based solutions &
restoration

Follow the NEBA
on LinkedIn



Contact

andreja.kutnar@innorenew.eu

uwe.kies@innovawood.eu

Website : neb.academy

Linkedin : [NEB-Academy](https://www.linkedin.com/company/NEB-Academy)