



Wood For Globe

**Towards a Global Wood Policy Platform:
Sustainable Wood for a Carbon-neutral
Bioeconomy**

**Thais Linhares Juvenal, Senior Forestry Officer, Forestry Division, FAO
Janice Burns, IUFRO**

**27th International Timber Construction Forum,
Innsbruck | 29 November 2023**

Wood For Globe

The project is led by

- **International Union of Forest Research Organizations (IUFRO)**

in collaboration with

- **Food and Agriculture Organization of the United Nations (FAO)**
- **Centre for Bioeconomy of the University of Natural Resources and Life Sciences, Vienna (BOKU)**

Financed by:

 **Forest Fund
Republic of Austria**

An initiative by the Federal Ministry
of Agriculture, Forestry, Regions
and Water Management



Outline

- 1** Objectives and project activities
- 2** Preliminary findings sustainable wood policies
- 3** Opportunities
- 5** Next steps



Wood For Globe



Objectives

- Contribute to the creation of policy networks and platforms
- Build on knowledge exchanges and good practices
- Disseminate and promote up-taking of scientific evidence

Wood: a potential solution for urgent global challenges



Work Package 1: Technical knowledge and policy experience exchange

- Global sustainable wood policy review
- Stock-taking of sustainable wood policies and approaches to encourage and assess carbon emission reduction potential
- Regional consultations and assessments of policies and existing networks in the Latin American and Central African region

SUSTAINABLE WOOD POLICIES

Discussion Paper

2023



Gary Bull & Erica Di Girolami



Work Package 2: Scientific knowledge and Experience Exchange

- Syntheses of latest scientific innovations and knowledge
- Research Topics: **wood in construction** and **wood fibre**
- Scientific exchange, mobility and input to dialogues



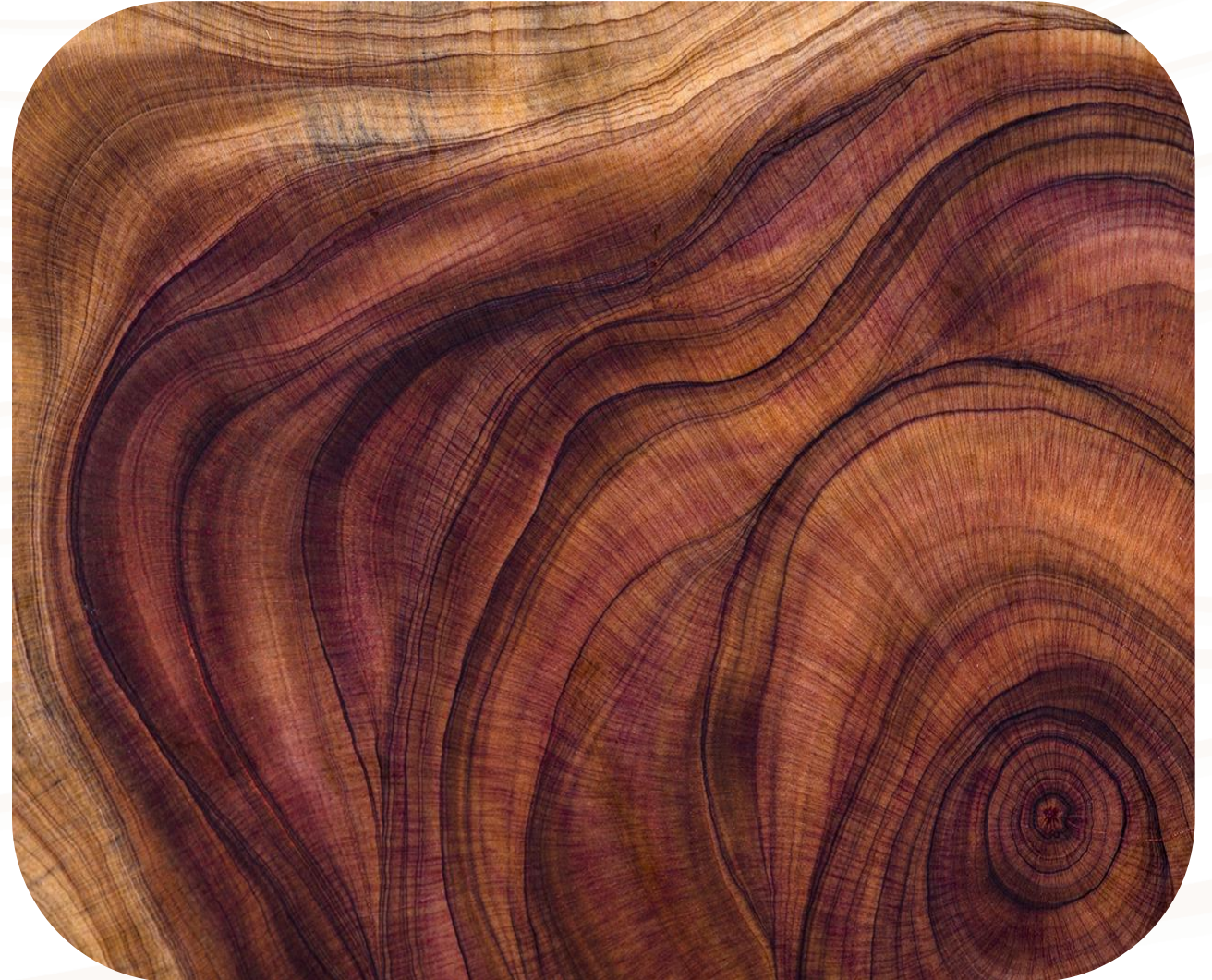
Work Package 3: Global and regional policy dialogues

- Stakeholder consultation in Asia and Latin America on sustainable forest-based bioeconomy
- Audience and media consumption analysis and profiling of audience with an affiliation to environmental sustainability
- Global policy dialogue on sustainable wood



Why Develop a Sustainable Wood Policy?

- **Decarbonizing Material Use.** Helps carbon sequestration, reducing emissions.
- **UN SDGs Alignment.** Addresses clean energy, climate action, and life on land goals.
- **Forest Health & Livelihoods.** Supports healthy forests, creates job opportunities, and conserves biodiversity.
- **Innovation & Collaboration.** Encourages innovation and requires collaborative stakeholder efforts.



Sustainable Wood Policies (Working Definition)

- Wood policies are based on the premise of sustainable forest management as a supplier of raw material, since it can both expand the sustained use of wood into a wide array of products (solid wood, traditional commodities, bioproducts and bioenergy), and substitute for fossil fuel-based products. The aim is to encourage and support a sustainable circular forest bioeconomy.
- Sustainable wood policies could be a set of policies, programs, initiatives and practices designed to promote the responsible management of forests and the production of wood and wood products.



Preliminary Findings

Key Issues in Sustainable Wood Policy

- 1. Lack of Consensus Definition:** No universally agreed definition leads to inconsistent practices and hampers sustainable forestry progress.
- 2. Inadequate Data Sharing:** Lack of a systematic framework for collecting and sharing wood-related data hampers informed decision-making and policy development.
- 3. Enforcement Challenges:** Difficulty in ensuring compliance and governance, particularly in regions with limited resources, contributes to persistent issues like illegal logging and trade
- 4. Absence of Direct Forest Management Links:** Disconnect between sustainable wood policies and forest management practices, hindering long-term resource sustainability.
- 5. Weak Collaborative Partnerships:** Insufficient collaboration among stakeholders obstructs progress in achieving sustainable wood policy objectives.



Preliminary Findings

Key Issues in Sustainable Wood Policy

6. **Global Policy Framework Weakness:** Inadequate global policies hinder cohesive responses and connection between sustainable wood policies and national forest policies.
7. **Integration Gap with Circular Forest Bioeconomy:** Lack of alignment inhibits maximizing forest resource value and waste reduction.
8. **Climate Change Integration:** Need to enhance connections between sustainable wood policies, carbon sequestration, and climate change discussions.
9. **Communication of Wood Product Merits:** Continued suspicion regarding the sustainable nature of wood product harvesting requires ongoing communication efforts.
10. **Financial Sector Engagement:** Improved linkages with financial services, pension funds, and insurance industries are needed for effective institutional investments.



Preliminary Findings

Audience and media consumption analysis and profiling of audience

1. **Median age of public** shows noticeable differences, with Africa in the 20s, Asia in the 30s and the EU in the 40s. These translate to different habits in media consumption and general outlook.
2. **Media consumption** is primarily conducted via mobile devices, with a predominance of video content.
3. There is generally **greater optimism towards environmental and economic issues** and prospects in African and Latin America than in the rest of the world.
4. **WhatsApp** emerges as the most popular communication platform, especially across African regions.



Opportunities

- 1. Consensus Definition Development:** Create a clear definition of "sustainable wood policy" for guidance and alignment.
- 2. Technology Integration for Compliance:** Embrace innovative technologies like satellite imagery and blockchain for monitoring and ensuring compliance, fostering transparency
- 3. Alignment with Nature-Based Solutions:** Align wood production with emerging nature-based solutions markets for sustainable forest management and biodiversity support.
- 4. Partnerships with NGOs and Indigenous Communities:** Collaborate with NGOs, indigenous groups, and smallholders for invaluable local knowledge in promoting responsible forest management.



Opportunities

- 5. Global Frameworks and Collaboration Platforms:** Foster collaborative global efforts through frameworks like COFO and UNFF to strengthen sustainable wood policies and practices.
- 6. Education Campaigns for Consumer Awareness:** Collaborate with educators and communication experts to enhance demand for sustainably sourced renewable products.
- 7. Engagement with Forest Investment Managers:** Support sustainable forest management's role in the climate, nature, social justice, and circular forest bioeconomy transitions through engagement with investment managers.



Preliminary recommendations

- **Ensure Sustainable Wood Sourcing:** Commitment to sourcing wood sustainably.
- **Encourage policy platforms to support learning from existing Initiatives:** Use of CPF, COFO and regional forest bodies for systematic assessment of progress.
- **Build Societal Consensus:** Foster consensus on forests' values, including nature-based solutions, including through media/communication campaign.
- **Promote Wood's Versatility:** Promote dissemination of wood's applications in construction, biomaterials, and energy production.
- **Strengthen linkages to Climate Change Mitigation and Adaptation:** Encourage inclusion of sustainable wood use in climate change programs and project proposals.
- **Champion Education & Innovation:** Emphasize education, communication, research, and commercialization integration.



Upcoming policy dialogues

- **March 2024** – Collaborative Partnership on Forests Sustainable Wood Main Event - hybrid event aligned with the International Day of Forests 2024 theme “Forests and Innovation” in-person panel in Rome, Italy / Online
- **July 2024** – Global policy dialogue on sustainable wood to be hosted on the sidelines of COFO / World Forestry Week – following up on the Ministerial Call on Sustainable Wood and building on project results



Keep updated by visiting the Wood for Globe webpage and following **#WoodForGlobe** and **#SW4SW** on social channels



<https://www.iufro.org/science/partnership-projects/wood-for-globe/>





Wood For Globe

Thank you

Thais Linhares Juvenal, FAO | thais.linharesjuvenal@fao.org

Janice Burns, IUFRO | burns@iufro.org